

IL17D Antibody (C-term)
Affinity Purified Rabbit Polyclonal Antibody (Pab)
Catalog # AP14679B**Specification**

IL17D Antibody (C-term) - Product Information

Application	WB,E
Primary Accession	Q8TAD2
Other Accession	NP_612141.1
Reactivity	Human
Host	Rabbit
Clonality	Polyclonal
Isotype	Rabbit IgG
Calculated MW	21893
Antigen Region	155-183

IL17D Antibody (C-term) - Additional Information**Gene ID** 53342**Other Names**

Interleukin-17D, IL-17D, Interleukin-27, IL-27, IL17D, IL27

Target/Specificity

This IL17D antibody is generated from rabbits immunized with a KLH conjugated synthetic peptide between 155-183 amino acids from the C-terminal region of human IL17D.

Dilution

WB~~1:1000

E~~Use at an assay dependent concentration.

Format

Purified polyclonal antibody supplied in PBS with 0.09% (W/V) sodium azide. This antibody is purified through a protein A column, followed by peptide affinity purification.

Storage

Maintain refrigerated at 2-8°C for up to 2 weeks. For long term storage store at -20°C in small aliquots to prevent freeze-thaw cycles.

Precautions

IL17D Antibody (C-term) is for research use only and not for use in diagnostic or therapeutic procedures.

IL17D Antibody (C-term) - Protein Information**Name** IL17D**Function** Induces expression of IL6, CXCL8/IL8, and CSF2/GM-CSF from endothelial cells.

Cellular Location
Secreted.

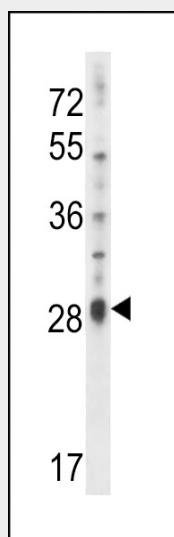
Tissue Location
Expressed preferentially in adipose, skeletal muscle and CNS.

IL17D Antibody (C-term) - Protocols

Provided below are standard protocols that you may find useful for product applications.

- [Western Blot](#)
- [Blocking Peptides](#)
- [Dot Blot](#)
- [Immunohistochemistry](#)
- [Immunofluorescence](#)
- [Immunoprecipitation](#)
- [Flow Cytometry](#)
- [Cell Culture](#)

IL17D Antibody (C-term) - Images



IL17D Antibody (C-term) (Cat. #AP14679b) western blot analysis in NCI-H460 cell line lysates (35ug/lane). This demonstrates the IL17D antibody detected the IL17D protein (arrow).

IL17D Antibody (C-term) - Background

The protein encoded by this gene is a cytokine that shares the sequence similarity with IL17. The treatment of endothelial cells with this cytokine has been shown to stimulate the production of other cytokines including IL6, IL8 and CSF2/ GM-CSF. The increased expression of IL8 induced by this cytokine was found to be NF-kappa B-dependent.

IL17D Antibody (C-term) - References

Davila, S., et al. Genes Immun. 11(3):232-238(2010)
Fakruddin, J.M., et al. Blood 109(5):1841-1849(2007)

Larousserie, F., et al. J. Immunol. 176(10):5890-5897(2006)
Clark, H.F., et al. Genome Res. 13(10):2265-2270(2003)
Starnes, T., et al. J. Immunol. 169(2):642-646(2002)